

PAC H108 FVL16 SKID

Diesel - Qmax 1.470 m³/h (6,470 USgpm) - Hmax 109 m (358 ft)



Indicative picture of the product

PAC H - Vacuum prime centrifugal pumps

The pump system consists of a centrifugal pump and a separator, which enables air to be separated from the liquid and be sucked by a vacuum pump - making automatic priming possible. Even with suction heights of several meters the machine rapidly evacuates the air from the suction pipe and starts to pump. Additionally, thanks to the semi-open impeller, the PAC H range is also suitable for pumping liquids with solids in suspension.

Applications

Both Atlas Copco and Varisco have decades of experience in designing and producing pumps. We have put those years of expertise into providing solutions that work across multiple applications. The PAC H (high flow) range is packed with features that not only meet, but exceed the needs of the market. We are focused on an efficient, extremely versatile pump that is suitable for many industries, including construction, general dewatering and emergency applications, such as flood clean up.

Benefits

Pump

High efficiency: 82% (B.E.P)

Rapid "dry" priming

Up to a height of 7,5 m (24.6 ft)

High resistance

To abrasive liquids and turbid sandy waters

Closed impeller

Solids handling up to 89 mm (3.5")

Diaphragm vacuum pump

Oil free suitable for dry running: no contamination of the environment

Mechanical shaft seal in oil bath

It allows the "dry running" operation of the pump

PAC H108 FVL16 SKID

Performance curves

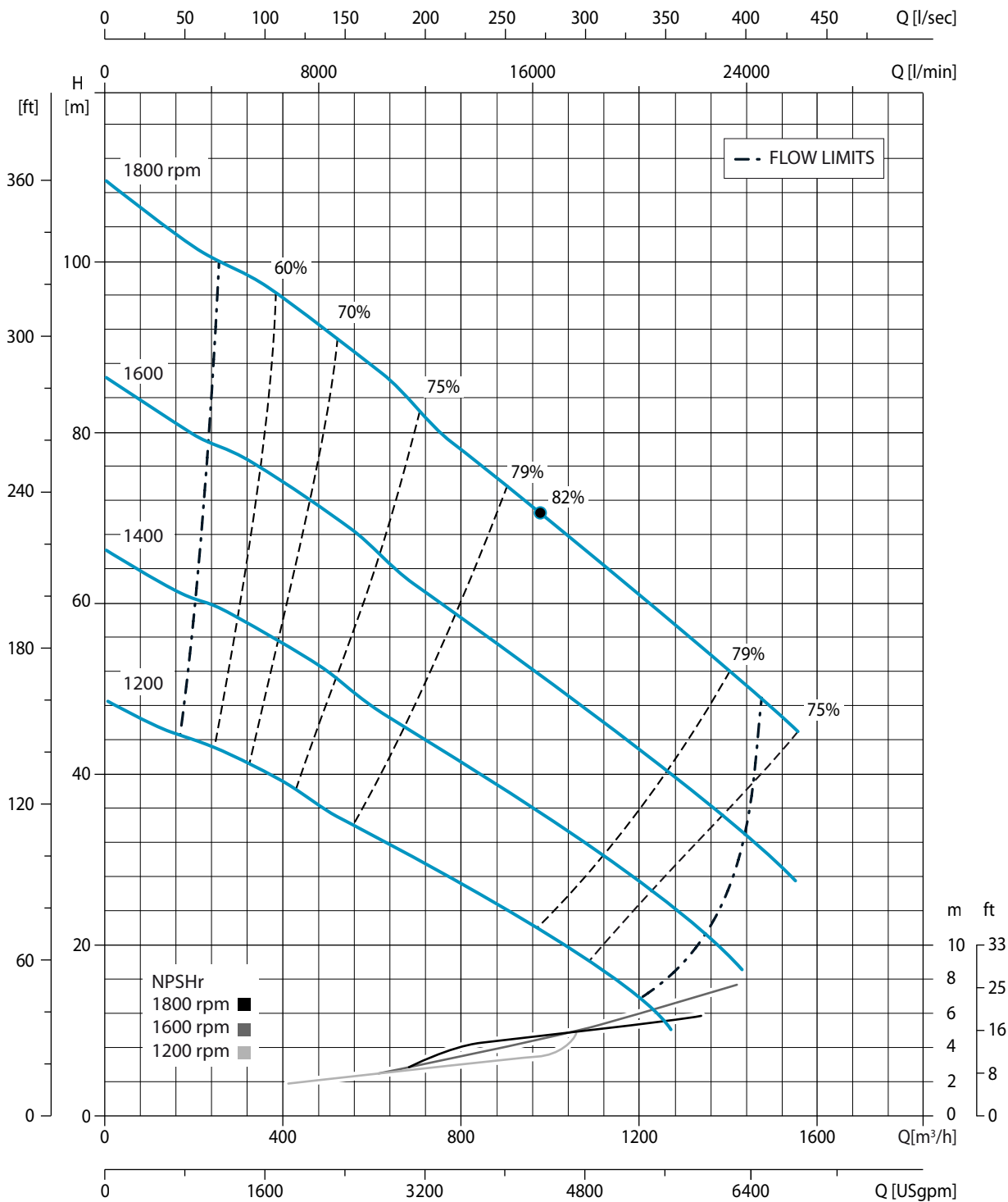
Test according to UNI EN ISO 9906 standard - level 2

Test liquid: clean water, density 1,000 kg/m³

Losses from priming system and check valve not included

Spherical solids handling: D.89 mm (3.5")

Max absorbed power: 257 kW - 345 HP (1.800 rpm)



PAC H108 FVL16 SKID

Technical data

Pump

Model	PAC H108
Qmax	408 l/s – 1.470 m ³ /h – 24.500 l/min (6,470 USgpm)
Hmax	109 m (358 ft)
Q max eff.	272 l/s - 980 m ³ /h – 16.300 l/min (4,310 USgpm)
Eff. max	82 %
Suction port	10" Flange
Delivery port	8" Flange
Impeller type	Enclosed, 2 vane
Impeller diameter	17"
Solids handling	3.5"
Material	G11
Casing	ASTM A536 80-55-06 ductile iron
Impeller	ASTM A743 CA6NM
Wear ring	ASTM A48 Class 20 grey iron
Wear plate	ASTM A48 Class 20 grey iron + NBR
Shaft	AISI 630 stainless steel
Mechanical Seal faces	Silicon carbide Vs Silicon carbide
Flushing	Yes
Elastomers	VITON
Lubrication	Oil
Check Valve	ASTM A536 ductile iron + NBR rubber flap
Separator	Fabricated steel
Vacuum pump	V22
Vacuum pump type	Diaphragm
Nominal air capacity	85 m ³ /h (50.0 cfm)
Max vacuum	0,9 bar
Drive	Link belt

Engine

Make	Volvo			
Model	TAD1182VE			
Type	Diesel turbo common rail			
Displacement	10.840 cm ³ (661 in ³)			
No. cylinders	6			
Cooling	Liquid with radiator			
Rpm type	Variable			
Standard speed	1.800 rpm			
EU emissions	2002/88/CE Stage V			
Starting	Electric			
Starting voltage	24 V			
Emissions reduction technology	SCR, DPF+DOC			
Speed [rpm]	1.200	1.400	1.600	1.800
Consumption [l/h]	-	-	-	-
Power [kW]	231	274	274	274
Power [HP]	309	367	367	367

Control panel

Model	PW750 (PW1)
	Manual operation
	Automatic operation: start-stop with transducers or floats
	Digital display with 8 languages (EN, SV, FR, DE, ES, IT, PT, NL) with:
	Hour meter, Rev counter, Liquid temperature, Oil pressure
	Battery voltmeter, Fuel level (%), Urea level
	Engine control unit (ECU) commands shutdown, derating or running depending on operating anomalies
	Automatic engine shutdown in case of:
	- low oil pressure
	- water overheating
	- low battery voltage
	(engine failure alarms with LED lights and display message)
	Service time (hours)
	Emergency stop button
	Push-button accelerator (up/down)
	(PW1 FleetLink control as option)

PAC H108 FVL16 SKID

Arrangement

Technical data

Material	S275JR EN 10025-2 carbon steel
Coatings	Polyester powder, average thickness of 80 µm
Color	Yellow and grey Atlas Copco (standard)
Features	Painted steel skid. Hot dip galvanised steel lifting beam. Lockable battery box. Fuel level indicator.
Battery	Acid charge Pb-Ca maintenance free 2x(12 V - 160 Ah - 680 A)
Tank	420 l (111.0 USG)
Locking keys	Fuel cap

PAC H108 SKID



Dimensions	1940 x 3250 x 2155 mm 76 x 128 x 85 "
H suction port	0,81 m (2.7 ft)
Dry weight	3900 kg (8,600 lb)